

Accu-Finish®

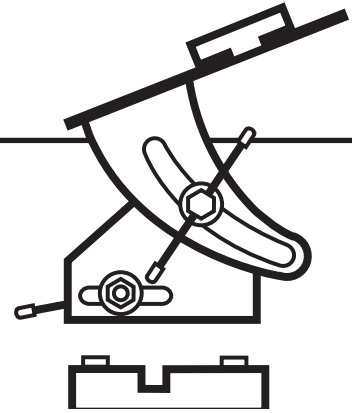
QuickMount Base for Grind-R-Table

INSTRUCTIONS • 001-724

The QuickMount Base makes it easy to mount the Grind-R-Table and other sharpening accessories to most bench grinders. The QuickMount Base system was developed using a 7" (17.78 cm) Baldor bench grinder as a design standard. This includes the 712 model and many of the 7300 series grinders. If you have one of these grinders, installing the QuickMount Base will be easier. If you are in the market to buy a new grinder, Accu-Finish distributes the 7" Baldor at very competitive prices. Call and talk to our sales department: 800-835-3519.

The QuickMount Base and attachments depend on rigid mounting. Bolt the grinder to a solid table or mounting plate large enough to accept the grinder and attachments. If the grinder is currently mounted on a pedestal, place a solid plate between the grinder and pedestal.

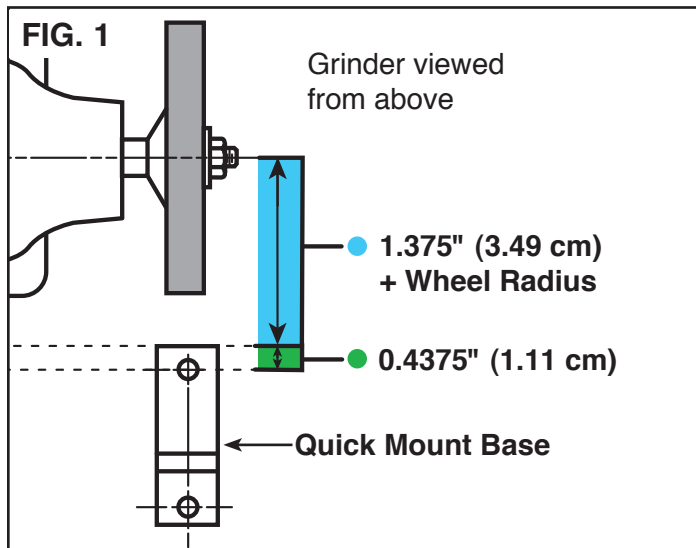
IMPORTANT: Remove any rubber feet, pad, etc., from the bottom of the grinder **BEFORE** mounting it. This is necessary to ensure a rigid mounting.



The Accu-Finish Universal Base Plate (#001-697) is a pre-drilled steel plate that makes mounting the QuickMount Base a lot easier. The Universal Base Plate is a 0.3125" (.79 cm) thick solid steel plate that is 20" (50.8 cm) wide by 15" (38.1 cm) deep and weighs 26 lbs. This pre-drilled mounting plate is supplied with four rubber feet in case you want to use it on top of your work bench. It is painted with heat-fused epoxy paint.

IMPORTANT: Please review all mounting instructions before drilling any holes. All dimensions should be within 0.0625".

QUICK MOUNT BASE PLACEMENT



Distance From the Grinder

Decide which side of the grinder to place the QuickMount Base on. If you don't have a preference, we suggest the right side.

The distance from the center of the wheel to the front of the QuickMount Base is determined by adding 1.375" to the radius of the wheel (**FIG. 1** and **FIG. 2**). The center of the first hole in the QuickMount Base can be found by adding another 0.4375" (1.11 cm) to this distance.

Note: Use the standard diameter of a **NEW** wheel when calculating the distance.

FIG. 2

Wheel Diameter	Distance from the Center of the Wheel
5" (12.70 cm)	3.875" (9.84 cm)
6" (15.24 cm)	4.375" (11.11 cm)
7" (17.78 cm)	4.875" (12.38 cm)
8" (20.32 cm)	5.375" (13.65 cm)

IMPORTANT

The guards are removed from the grinder only for clarity of these illustrations. NEVER OPERATE THE GRINDER LIKE THIS OR WITH ANY GUARDS REMOVED.

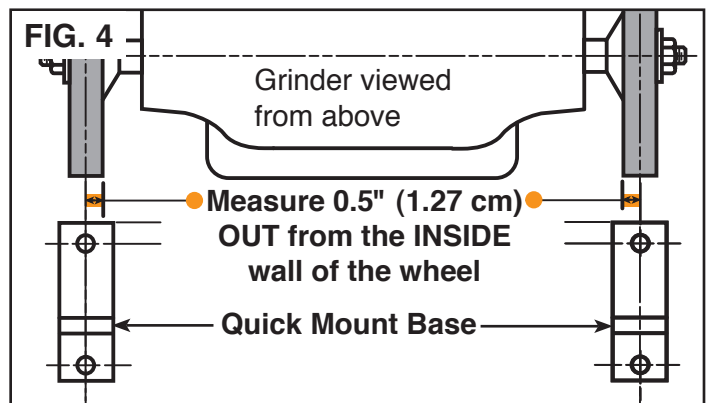
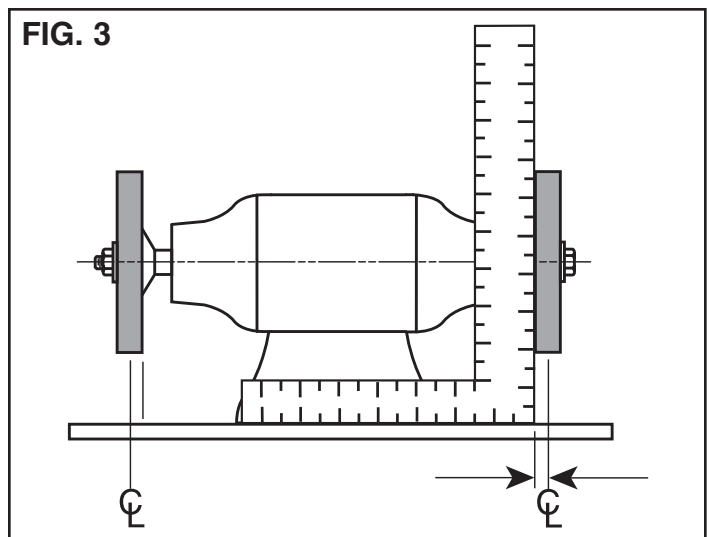
Centering

Use a carpenter's square to locate the inside edge of the wheel on the table/plate surface (**FIG. 3**). Measure 0.5" (1.27 cm) from the inside edge of the grinding wheel. This puts the QuickMount Base on center for a 1" wide wheel. If your wheel is less than 1" (2.54 cm) wide, the block will be proportionally off center. We advise that you still use this 0.5" (1.27 cm) offset even if your wheels are less than 1" wide. This will allow all attachments to work without having to move the base.

NOTE: The **MAXIMUM** wheel width for QuickMount Attachments is 1" (2.54 cm) wide. **DO NOT USE ANY OF THESE ATTACHMENTS ON GRINDERS EQUIPPED WITH WHEELS WIDER THAN 1" (2.54 cm).**

Before drilling any holes for the QuickMount Base, note that the front hole is 0.4375" (11.1 mm) back from the front edge of the base. Use the template (**page 3**) to find the center of the holes for drilling. We suggest using 0.3125" (7.9 mm) bolts and drilling 0.4375" (11.1 mm) holes in the mounting plate. This allows for some final adjustments before tightening.

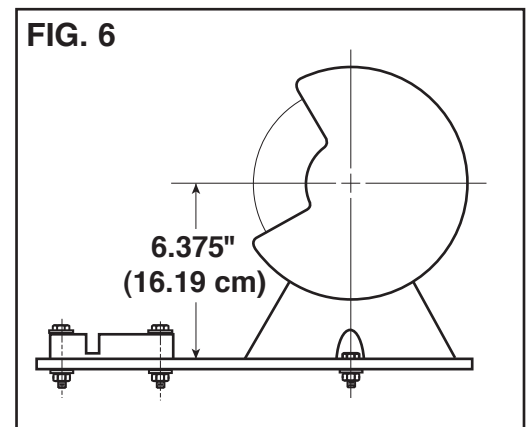
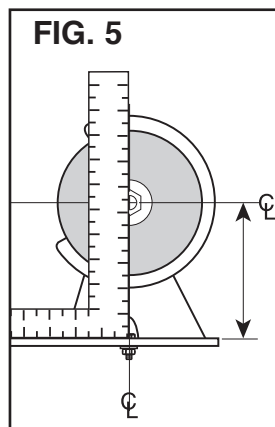
IMPORTANT: The QuickMount Base must be parallel to the grinding wheel. Be sure that the base is not cocked relative to the wheel before final tightening of the bolts.



Height

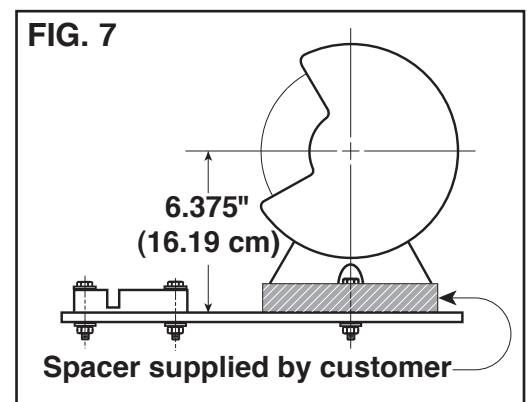
Once the placement of the QuickMount Base is determined, the only remaining detail is proper height. Remove the end plate from the grinder to expose the arbor. Using a carpenter's square, determine the distance from the surface to the center of the arbor. (**FIG. 5**) The correct distance from the surface to the center of the arbor is 6.375". (**FIG. 6**)

IMPORTANT: Remove all rubber feet or pads from the bottom of the grinder.



If the Grinder is Too Short

If the distance is less than 6.375" (16.19 cm) you will need to add a spacer (shim) below the grinder that is the right thickness to bring the arbor center up to 6.375" (16.19 cm) (**FIG. 7**).

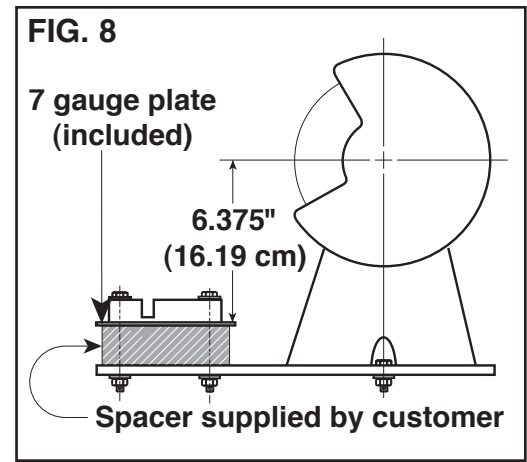


Spacer for the Grinder

6.375" (16.19 cm)	-	Grinder's height (from surface to arbor)	=	Thickness of spacer to place underneath grinder
	-		=	

If the Grinder is Too Tall

If the distance is more than 6.375" (16.19 cm), you will need to place a spacer (shim) under the QuickMount Base to bring it up so that it is 6.375" (16.19 cm) from the arbor center to the bottom of the QuickMount Base. **(FIG. 8)** NOTE: Between the spacer and the QuickMount Base is a 7 gauge [0.179" (.45 cm) thick] steel plate. This plate comes with every QuickMount Base and should only be used to correct the problem of the too tall grinders. If the grinder is too tall you **MUST** use this 7 gauge plate **UNDER** the QuickMount Base. **BE SURE** to allow for the thickness of this 0.179"(.45 cm) plate when figuring the thickness of your spacer under the QuickMount Base. **ALSO**, be sure the 6.375" (16.19 cm) dimension is measured from the **TOP** of the 7 gauge plate.



Spacer for the QuickMount Base						
Grinder's height (from surface to arbor)	-	6.375" (16.19 cm) Correct distance between arbor and surface	-	0.179" (.45 cm) 7 gauge steel plate	=	Thickness of spacer to place underneath Quick Mount Base
	-		-		=	

Attaching the Grind-R-Table to the QuickMount Base

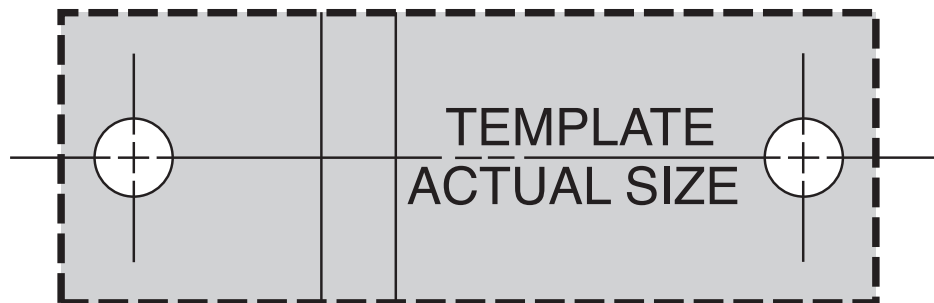
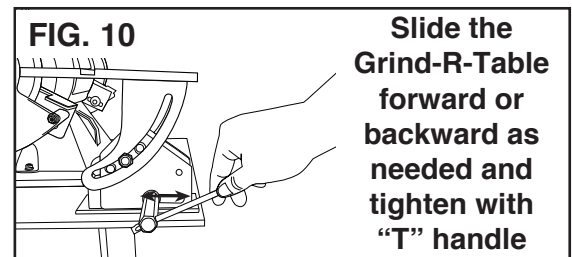
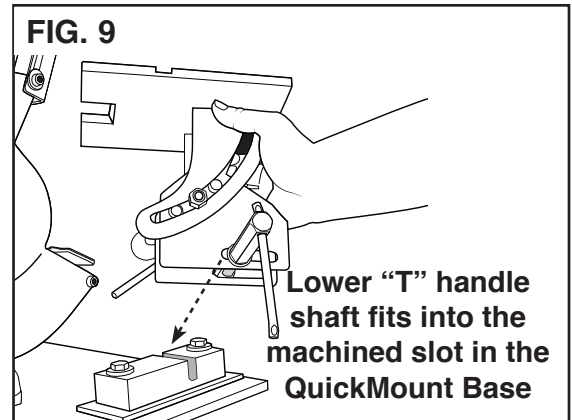
After the QuickMount Base is securely fastened in the correct location, the Grind-R-Table can be attached and used. Make sure the grinder is OFF and the wheel has stopped. Loosen the lower "T" handle about one turn (don't remove it). Set the Grind-R-Table directly over the QuickMount Base. Make sure the lower handle shaft slides fully into the machined slot in the top of the base **(FIG. 9)** and that the bottom of the Grind-R-Table is even with the bottom of the QuickMount Base.

Slide the Grind-R-Table forward or backward as needed to establish a 0.125" gap between the grinding wheel and the back of the notch in the table. **(FIG. 10)**

NOTE: Adjust this gap regularly as the grinding wheel wears.

Be certain that the sides of the grinding wheel adequately clear the sides of the table notch. Tighten the lower "T" handle and verify that the Grind-R-Table is secure before turning on the grinder.

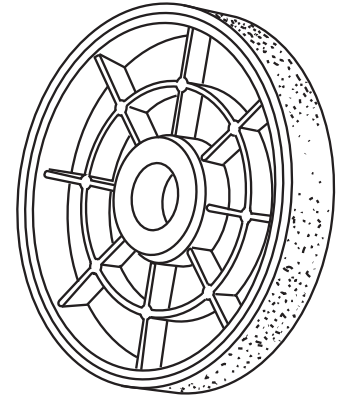
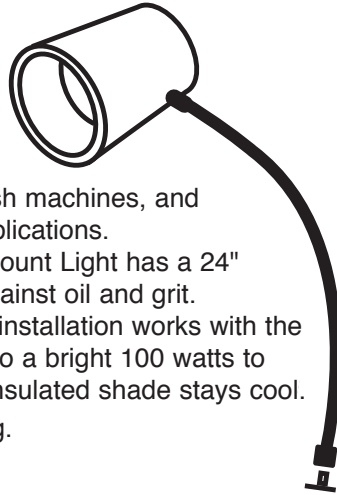
To remove the Grind-R-Table, loosen the handle and lift up. Always turn the grinder off and let the wheel STOP before removing or changing any QuickMount attachments.



Accu-Finish® BENCH GRINDER ACCESSORIES

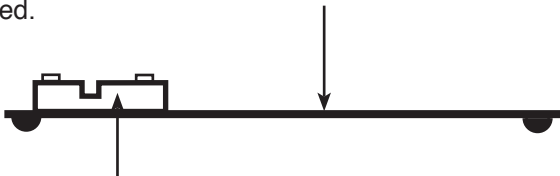
QuickMount Light Kit #001-756

This QuickMount Light Kit fits perfectly with the Grind-R-Table and Accu-Finish machines, and works well for many other applications. Extra heavy-duty, the QuickMount Light has a 24" flexible neck that is sealed against oil and grit. QuickMount bracket for easy installation works with the Universal Base Plate. Rated to a bright 100 watts to provide plenty of work light. Insulated shade stays cool. 115 V. 3-prong grounded plug.



Universal Base Plate #001-697

Solid steel mounting plate for QuickMount Base. 0.3125" (0.79 cm) thick, 20" (50.8 cm) wide by 15" (38.1 cm) deep. This pre-drilled mounting plate is supplied with four rubber feet for bench top use. Plate weighs 26 lbs and is powder painted.



QuickMount Base #001-724

Some like to use their Grind-R-Table on a small belt sander. With an extra QuickMount Base block you can quickly move the Grind-R-Table from grinder to belt sander or from side to side on your grinder.

Baldor 7" Grinder #001-704

Accu-Finish distributes the 7" Baldor bench grinder at a very competitive price!

BG Diamond Wheels

Accu-Finish® BG diamond wheels are designed to handle carbides, ceramics and cermets. BG diamond wheels grind cooler than other wheels, are affordable, long lasting and they stay flat without grooving or needing dressing. Plus, they are not ruined if you accidentally grind steel like other diamond wheels.

BG wheels are 6" O.D. x 1" wide for use up to 3600 RPM. **Money-back guarantee.**

#001-328	60 Grit	"Rough"
#001-329	80 Grit	"Coarse"
#001-330	100 Grit	"Medium Rough"
#001-331	180 Grit	"Medium"
#001-332	220 Grit	"Medium Fine"
#001-333	360 Grit	"Fine"
#001-372	600 Grit	"Extra Fine"
#001-635	Pkg. "A" (60 & 220)	
#001-636	Pkg. "B" (100 & 360)	

Specify arbor size:

1/2", 5/8", 3/4", 16 mm, or 20 mm

GLENDO
CORPORATION

900 Overlander Road • Emporia, KS 66801 USA
800-835-3519 • 620-343-1084 • Fax: 620-343-9640
glendo@glendo.com • www.accu-finish.com
Last Updated: February 13, 2013